

## Dawn Bartel

---

**From:** scotts@strategicmunicipal.com  
**Sent:** Thursday, January 3, 2019 8:04 PM  
**To:** Dawn Bartel  
**Cc:** Brian M. Helminger; Kevin Skogman  
**Subject:** HOVMSD Interceptor Improvements (GLTS QUOTE)  
**Attachments:** 2 c glts jh010319email quote.pdf; 3 Quote # 10825 H.pdf; 3 Quote # 10825.PDF; 4 c glts sms122018email RfQ.pdf; 5a e.2 091317 c REVIEW system H.pdf; 5b e.4a 021518 0350.pdf; 6a inventory s.2c REVIEW 122018.pdf; 6b inventory s.2b REVIEW 110517.pdf

Hi Dawn (Brian and Kevin)...

The attached GLTS quote is for sharing with the Commissioners.

- Strategic recommends the District award Contract to GLTS for the "base work" (Thilmany - land, Fox and Heesakker and Canal East - marine) (~\$26,800)
- Strategic recommends the District conditionally award the Optional Canal West (~\$6,500) and Miscellaneous sections (~\$2,000) subject to the observed condition of the "base work"
- The grand total is ~ \$35,300.
- **attachments 4 - 6b** are the request for quote references Strategic shared with GLTS.

Best Regards...

Scott S.

*Strategic Municipal Services, Inc.*

**SMS**

Scott M. Schramm, PE, PLS, President  
118 Mead Avenue  
Plymouth, WI 53073  
(920) 893-3147 (phone) 3149 (fax)  
[ScottS@StrategicMunicipal.com](mailto:ScottS@StrategicMunicipal.com)  
[StrategicMunicipalServices.com](http://StrategicMunicipalServices.com)

[Print](#) | [Close Window](#)

**Subject: Quote # 10825**

**From: Jeff Healy <jeff@greatlakestvseal.com>**

**Date: Thu, Jan 03, 2019 3:10 pm**

**To: "scotts@strategicmunicipal.com" <scotts@strategicmunicipal.com>**

**Attach: Quote # 10825.PDF**

As per our conversation, I think it best to do this project in the spring. We are thinking sometime in May. This may be sooner but everything is weather dependent. With the large flow of warmer water and the draft the heavy flow draws in fog or steam which is hard to control. We cannot guaranty the quality of the picture. We may try to do some of the land based sewers, weather permitting sooner.

MH #4 in not accessible We would probably have to TV from MH 5.

Please call with any questions. Call Brett Healy or myself. I will be out of the office until Jan 14th, But I will take calls.

Thanks for the opportunity to work with you again

Please review the attached quote. Feel free to contact us if you have any questions. We look forward to working with you.

Thank you for your business!

Jeff Healy  
Great Lakes TV Seal, Inc.  
3600 Kewaunee Road  
Green Bay, WI 54311  
Phone: 920-863-3663  
Cell: 920-371-3195  
Fax: 920-863-3662  
e-mail: jeff@greatlakestvseal.com

Attached is Quote # 10825 from GREAT LAKES TV SEAL INC.

To view the attachment, you must have the Adobe® Reader® software installed on your computer. To get a free version of this software from Adobe, click here: <http://www.adobe.com/support/downloads/main.html>

Copyright © 2003-2019. All rights reserved.



3600 Kewaunee Road  
 Green Bay, WI 54311  
 Phone: (920) 863-3663  
 Fax: (920) 863-3662

# Quotation

Quote Number:  
10825

Quote Date:  
Jan 3, 2019

**Quoted to:**

HEART OF THE VALLEY METRO.  
 801 Thilmany Road  
 Kaukauna, WI 54130

Page:  
1

Quote Good Thru	Payment Terms	Sales Rep
2/2/19	Net 30 Days	

Description	Unit of Measure	Quantity	Unit Price	Extension
HOVMSD INTERCEPTOR IMPROVEMENTS	.			
PIPE INSPECTION THILMANY MILL LAND	FOOT	2,010.00	0.920	1,849.20
PIPE INSPECTION FOX RIVER MARINE	FOOT	5,750.00	3.080	17,710.00
PIPE INSPECTION HEESAHER PARK MARINE	FOOT	330.00	3.080	1,016.40
PIPE INSPECTION CANAL EAST MARINE	FOOT	2,020.00	3.080	6,221.60
				<u>26,797.20</u>
OPTIONAL CANAL WEST	.			
PIPE INSPECTION DOYLE PARK MARINE	FOOT	1,530.00	3.080	4,712.40
PIPE INSPECTION DOYLE PARK AND ISLAND PARK	FOOT	1,200.00	1.490	1,788.00
				<u>6,500.40</u>
MISC.	.			
PIPE INSPECTION VARIOUS SHORT SECTIONS - CAMERA MUST BE ASSEMBLED AND TAKEN DOWN IN MANHOLE. SHORT SECTIONS.	FOOT	350.00	5.700	1,995.00
				<u>1,995.00</u>
				<u>35,292.60</u>
ADDITIONAL WORK TIME AND MATERIAL CREW, EQUIPMENT AND CONFINED SPACE EQUIPMENT.	.			
CLEAN SPACE ON PIPE WALL SCRATCH TEST, WE RECOMMEND SETTING A CONCRETE SCREW FLUSH IN THE PIPE WALL.	HOUR	1.00	225.000	225.00
LATER RETURN AND SEE WHAT THE (MIC)	.			

Please notify Great Lakes within 30 days if the quotation is accepted and the above prices will be honored. This acknowledgment will enable us to schedule your work more efficiently. If prevailing wages apply - this quote will be adjusted accordingly. Bond fee and/or additional insurance requirements are not included in the quote amount. If applicable, add the amount(s) to this quote.

Subtotal	Continued
Sales Tax	Continued
<b>Total</b>	Continued



3600 Kewaunee Road  
 Green Bay, WI 54311  
 Phone: (920) 863-3663  
 Fax: (920) 863-3662

# Quotation

Quote Number:  
10825

Quote Date:  
Jan 3, 2019

**Quoted to:**

HEART OF THE VALLEY METRO.  
 801 Thilmany Road  
 Kaukauna, WI 54130

Page:  
2

Quote Good Thru	Payment Terms	Sales Rep
2/2/19	Net 30 Days	

Description	Unit of Measure	Quantity	Unit Price	Extension
DETERIORATION WAS OVER THAT TIME PERIOD.  QUANTITIES ARE ESTIMATED, ACTUAL QUANTITIES WILL BE INVOICED				

Please notify Great Lakes within 30 days if the quotation is accepted and the above prices will be honored. This acknowledgment will enable us to schedule your work more efficiently. If prevailing wages apply - this quote will be adjusted accordingly. Bond fee and/or additional insurance requirements are not included in the quote amount. If applicable, add the amount(s) to this quote.

Subtotal	35,517.60
Sales Tax	
<b>Total</b>	<b>35,517.60</b>



3600 Kewaunee Road  
 Green Bay, WI 54311  
 Phone: (920) 863-3663  
 Fax: (920) 863-3662

# Quotation

Quote Number:  
10825

Quote Date:  
Jan 3, 2019

**Quoted to:**

HEART OF THE VALLEY METRO.  
 801 Thilmany Road  
 Kaukauna, WI 54130

Page:  
1

Quote Good Thru	Payment Terms	Sales Rep
2/2/19	Net 30 Days	

Description	Unit of Measure	Quantity	Unit Price	Extension
HOVMSD INTERCEPTOR IMPROVEMENTS	.			
PIPE INSPECTION THILMANY MILL LAND	FOOT	2,010.00	0.920	1,849.20
PIPE INSPECTION FOX RIVER MARINE	FOOT	5,750.00	3.080	17,710.00
PIPE INSPECTION HEESAHER PARK MARINE	FOOT	330.00	3.080	1,016.40
PIPE INSPECTION CANAL EAST MARINE	FOOT	2,020.00	3.080	6,221.60
OPTIONAL CANAL WEST	.			
PIPE INSPECTION DOYLE PARK MARINE	FOOT	1,530.00	3.080	4,712.40
PIPE INSPECTION DOYLE PARK AND ISLAND PARK	FOOT	1,200.00	1.490	1,788.00
MISC.	.			
PIPE INSPECTION VARIOUS SHORT SECTIONS - CAMERA MUST BE ASSEMBLED AND TAKEN DOWN IN MANHOLE. SHORT SECTIONS.	FOOT	350.00	5.700	1,995.00
ADDITIONAL WORK TIME AND MATERIAL CREW, EQUIPMENT AND CONFINED SPACE EQUIPMENT.	HOUR	1.00	225.000	225.00
CLEAN SPACE ON PIPE WALL SCRATCH TEST, WE RECOMMEND SETTING A CONCRETE SCREW FLUSH IN THE PIPE WALL.	.			
LATER RETURN AND SEE WHAT THE (MIC)	.			

Please notify Great Lakes within 30 days if the quotation is accepted and the above prices will be honored. This acknowledgment will enable us to schedule your work more efficiently. If prevailing wages apply - this quote will be adjusted accordingly. Bond fee and/or additional insurance requirements are not included in the quote amount. If applicable, add the amount(s) to this quote.

Subtotal	Continued
Sales Tax	Continued
Total	Continued





3600 Kewaunee Road  
 Green Bay, WI 54311  
 Phone: (920) 863-3663  
 Fax: (920) 863-3662

# Quotation

Quote Number:  
10825

Quote Date:  
Jan 3, 2019

**Quoted to:**

HEART OF THE VALLEY METRO.  
 801 Thilmany Road  
 Kaukauna, WI 54130

Page:  
2

Quote Good Thru	Payment Terms	Sales Rep
2/2/19	Net 30 Days	

Description	Unit of Measure	Quantity	Unit Price	Extension
DETERIORATION WAS OVER THAT TIME PERIOD.  QUANTITIES ARE ESTIMATED, ACTUAL QUANTITIES WILL BE INVOICED				

Please notify Great Lakes within 30 days if the quotation is accepted and the above prices will be honored. This acknowledgment will enable us to schedule your work more efficiently. If prevailing wages apply - this quote will be adjusted accordingly. Bond fee and/or additional insurance requirements are not included in the quote amount. If applicable, add the amount(s) to this quote.

Subtotal	35,517.60
Sales Tax	
<b>Total</b>	<b>35,517.60</b>

[Print](#) | [Close Window](#)

**Subject:** HOVMSD Interceptor Improvements (REQUEST for QUOTE)

**From:** scotts@strategicmunicipal.com

**Date:** Thu, Dec 20, 2018 12:09 pm

**To:** "Brett Healy" <brett@greatlakestvseal.com>, "Jeff Healy" <jeff@greatlakestvseal.com>

**Cc:** "Brian M. Helminger" <brian.helminger@hvmsd.org>, "Kevin Skogman" <kevin.skogman@hvmsd.org>

**Bcc:** "Scott Schramm" <ScottS@StrategicMunicipal.com>

**Attach:** 2a e.2 091317 c REVIEW system H.pdf

2b e.4a 021518 0350.pdf

3a inventory s.2c REVIEW 122018.pdf

3b inventory s.2b REVIEW 110517.pdf

Hi Brett and Jeff...

- **objective**
- the District agreed it may be prudent to immediately review key parts of the system and document changes / defects from the 2015 clean / TV. This would be before their routine 5-year clean / TV
- **attachments 2** identify the system
- **inventory**
- **3a** summarizes RCP mains observed with defects / changed conditions (based on 2015). The top of the page summarizes the key areas and lengths
- based on the 2015 pipe ratings - it may not be necessary to TV both the **1**) Canal (west - Doyle Park - 1,530') **and 2**) miscellaneous sections (350'). **Include** individual line item costs for these two areas - then the District can decide if they want to include.
- **3b** is a summary inventory of ALL District sewers
- **schedule**
- the Commission will review your quote and authorize the work at their **01/08 meeting**
- the Commission would like the TV work completed soon - the tough one is the 5,000' in the river between 10 and 15
- advise whether you would **1**) use boat access if it stays mild - ice off **2**) wait for ice on and drive out **or 3**) wait until Spring ice out
- **costs**
- identify additional water access costs related to the seasonal weather
- **deliverables** would include standard documentation (electronic and bound) including pipe ratings and defect reports

Your call is always welcome...

Best Regards...

Scott S.

***Strategic Municipal Services, Inc.***

Scott M. Schramm, PE, PLS, President

118 Mead Avenue

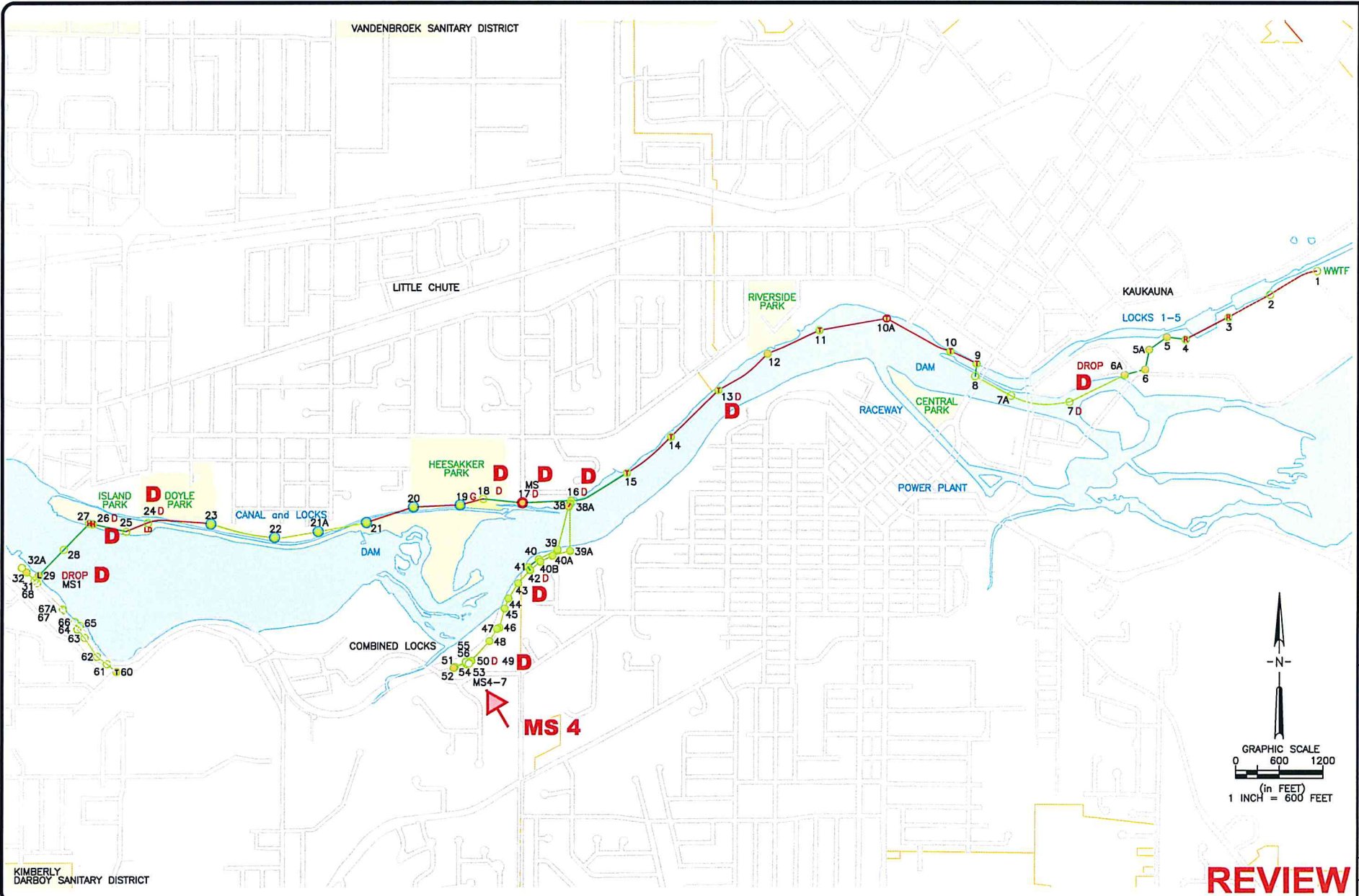
Plymouth, WI 53073

(920) 893-3147 (phone) 3149 (fax)

[ScottS@StrategicMunicipal.com](mailto:ScottS@StrategicMunicipal.com)

[StrategicMunicipalServices.com](http://StrategicMunicipalServices.com)

Copyright © 2003-2018. All rights reserved.



ORTHOPHOTO:

KIMBERLY DARBOJ SANITARY DISTRICT

VANDEMBROEK SANITARY DISTRICT

LITTLE CHUTE

RIVERSIDE PARK

KAUKAUNA

LOCKS 1-5

WWTF

ISLAND PARK

DOYLE PARK

CANAL and LOCKS

HEESAKKER PARK

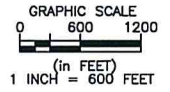
RACEWAY

CENTRAL PARK

POWER PLANT

COMBINED LOCKS

MS 4

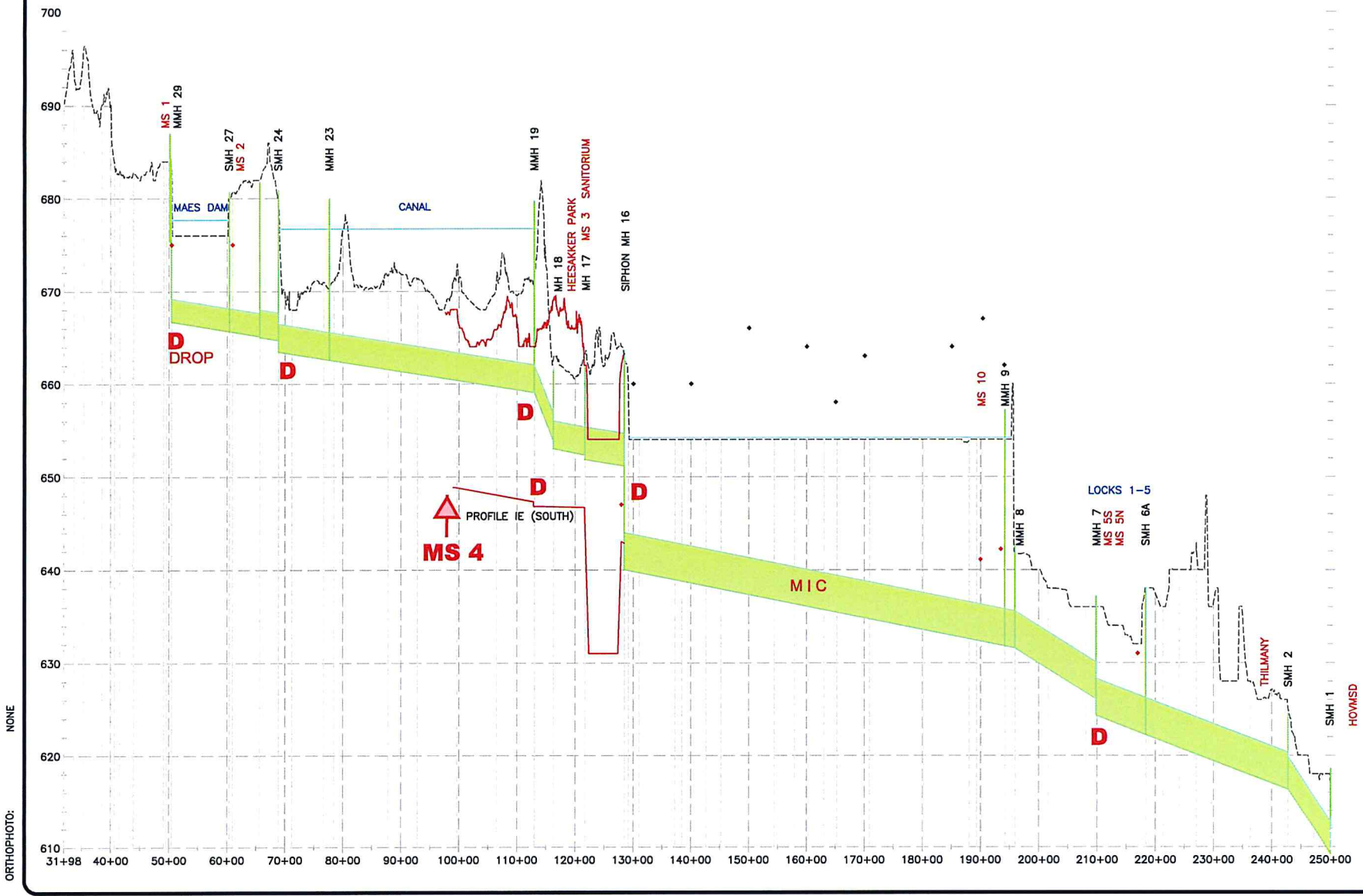


**REVIEW**

<p><b>SMS</b> SOLUTIONS MUNICIPAL SERVICES, INC.</p>		<p>MUNICIPAL • INFRASTRUCTURE • PLANNING TRANSPORTATION • FINANCE</p>	
PROJECT NO.	10061	DATE	AUG 2017
DATE	AUG 2017	SCALE	1"=600' (25:304)
FILE NO.	S 01	DATE	AUG 2017
DATE	08/20/17	SCALE	1:50 PLS
PROJECT NO.	E-1	DATE	08/20/17
DATE	08/20/17	SCALE	1:50 PLS
<p>INTERCEPTOR CONVEYANCE SYSTEM PRIORITY ACTION PLAN HEART OF THE VALLEY METROPOLITAN SEWERAGE DISTRICT, OUTAGAMIE COUNTY</p>			
FILE NO.	10061-1	DATE	
SHEET	1	TOTAL SHEETS	1



**REVIEW**



ORTHOPHOTO: NONE

<b>10060-4</b> SHEET NO. 4 OF 4		DATE: 02/15/18 DRAWN BY: [Name] CHECKED BY: [Name]		PROJECT NO: 10060 DATE: FEB 2018 SCALE: 1"=50'-0" (25'-0" x 35'-0")		REVISIONS: [Table with columns for description, date, and author]		<b>SMS</b> STRATEGIC MUNICIPAL SERVICES, INC. MUNICIPAL • INFRASTRUCTURE • PLANNING TRANSPORTATION • FINANCE	
------------------------------------	--	--	--	---	--	---	--	---	--

PROFILE - EXISTING NORTH  
 ALTERNATIVE - RELOCATE TO BANK  
 HEART of the VALLEY METROPOLITAN  
 SEWERAGE DISTRICT, OUTAGAMIE COUNTY

**DEFECT SUMMARY  
INTERCEPTOR**  
Heart of the Valley Metropolitan Sewerage District

**REVIEW**  
**12/20/18**

structure				interceptor					notes		
from	to	type	location	L length	L length	φ diameter	material (I)	rating R pipe R O&M	photos	media setup	
<b>Summary</b>				<b>13,190</b>							
Thilmany Mill				2,010		48					
Fox River				5,750		48					
Heesakker Park				330		36					
Canal (east)				2,020		36					
Canal (west - Doyle Park)				1,530		36				xx OK rating	
Canal (west - Doyle and Island Parks)				1,200		36					
Miscellaneous				350	18, 27, 30					xx OK rating	
<hr/>											
<b>Thilmany Mill</b>											
2	1	land	Combined Locks	710.0	710	48 RCP	26	2 188-9	✓	16-08	
3	2	land	Combined Locks	642.5	640	48 RCP	90	0			
4	3	land	Combined Locks	662.9	660	48 RCP	150	0 still	✓	16-07 ✓, 41	
<b>Fox River</b>											
10	9	marine	Kaukauna	406.7	410	48 RCP	561	6 359-62			
10A	10	marine	Kaukauna	997.2	1,000	48 RCP	1203	1 350-4		16-06	
11	10A	marine	Kaukauna	946.7	950	48 RCP	1143	13 338-45		16-06	
12	11	marine	Kaukauna	791.5	790	48 RCP	936	2			
13	12	marine	Kaukauna	865.7	870	48 RCP	1060	12 321-9		16-05, 31	
14	13	marine	Little Chute	926.9	930	48 RCP	1113	0 313-16			
15	14	marine	Little Chute	799.8	800	48 RCP	972	10 302-8			
<b>Heesakker Park</b>											
19	18	marine	Little Chute	329.3	330	36 RCP	252	9 283-4			
<b>Canal (east)</b>											
20	19	marine	Little Chute	649.6	650	36 RCP	512	2 277-8			
21	20	marine	Little Chute	685.9	690	36 RCP	540	1			
21A	21	marine	Little Chute	684.7	680	36 RCP	0	1		xx OK rating	
<b>Canal (west - Doyle Park)</b>											
22	21A	marine	Little Chute	615.6	620	36 RCP	0	9 261-3		xx OK rating	
23	22	marine	Little Chute	914.5	910	36 RCP	0	6 253-6		xx OK rating	
<b>Canal (west - Doyle and Island Parks)</b>											
24	23	land	Kaukauna	881.1	880	36 RCP ✓	528	0 still	✓	16-02 ✓, 19	
25	24	land	Kaukauna	320.8	320	36 RCP	177	10 385-6	✓	16-02	
<b>Miscellaneous</b>										xx OK rating	
29	ms 1	land	Combined Locks	17.0	20	27 RCP	0	3 77	✓		
31	ms 1	land	Combined Locks	52.6	50	27 RCP	0	0			
31A	31	land	Combined Locks	151.2	150	18 RCP	0	7 65-6			
32A	31A	land	Combined Locks	94.6	90	18 RCP	2	1			
38	38A	land	Little Chute	39.9	40	30 RCP → PV	12	0 215	✓		

**Footnotes:**

(I) GLTS reports and video (2016-17)

**DEFECT SUMMARY  
INTERCEPTOR**  
Heart of the Valley Metropolitan Sewerage District

**REVIEW**  
**11/05/17**

structure				interceptor					notes		
from	to	type	location	L <sub>length</sub>	L <sub>length</sub>	φ diameter	material	rating		photos	media setup
						(I)	R <sub>pipe</sub>	R <sub>O&amp;M</sub>			
<b>Summary</b>				<b>25,410</b>							
CIPP					7,710	30%					
PVC					4,510	20%					
RCP					13,190	50%					
5	4	land	Combined Locks	246.0	250	48	CIPP	0	0		
5A	5	land	Combined Locks	318.9	320	48	CIPP	0	0		
6	5A	land	Combined Locks	275.7	280	48	CIPP	0	0		
6A	6	land	Combined Locks	281.1	280	48	CIPP	0	0		
7	6A	marine	Kaukauna	873.0	870	48	CIPP				
7A	7	marine	Kaukauna	816.0	820	48	CIPP				
8	7A	marine	Kaukauna	561.0	560	48	CIPP				
9	8	marine	Kaukauna	186.3	190	48	CIPP	0	2		
16	15	land	Little Chute	863.6	860	48	CIPP ✓	0	4		16-04, 28
17	16	land	Little Chute	671.0	670	42	CIPP	0	4		
18	17	land	Little Chute	550.9	550	36	CIPP	0	0		
26	25	land	Kaukauna	472.8	470	36	CIPP	0	0		
27	26	land	Kaukauna	55.7	60	30	CIPP	0	0		
29	27	land	Combined Locks	991.3	990	30	CIPP	18	4 6 ✓		
40	39	land	Kaukauna	289.7	290	27	CIPP ✓	0	0		16-09 ✓, 60
41	40	land	Kaukauna	191.3	190	27	CIPP	0	0		lined
42	41	land	Kaukauna	59.0	60	27	CIPP	0	0		lined (08)
16	38A	land	Little Chute	40.5	40	36	PVC	0	0		
42	40B	land	Kaukauna	186.8	190	30	PVC	0	0		
40B	40A	land	Kaukauna	179.5	180	30	PVC	0	0		
40A	39A	land	Kaukauna	256.0	260	30	PVC	0	0		
43	42	land	Combined Locks	253.3	250	36	PVC	0	3		
44	43	land	Combined Locks	251.4	250	36	PVC	0	0		
45	44	land	Combined Locks	148.5	150	36	PVC	0	0		
46	45	land	Combined Locks	271.5	270	36	PVC	0	0		
47	46	land	Combined Locks	37.1	40	36	PVC	0	0		
48	47	land	Combined Locks	200.5	200	36	PVC	0	0		
49	48	land	Combined Locks	363.7	360	36	PVC	0	0		
50	49	land	Combined Locks	45.1	50	36	PVC	0	0		
51	56	land	Combined Locks	160.6	160	27	PVC	0	51		
52	ms 4-7	land	Combined Locks	196.5	200	27	PVC	0	0		
54	53	land	Combined Locks	35.7	40	8	PVC	9	3		
54	56	land	Combined Locks	29.3	30	8	PVC	6	2		
55	56	land	Combined Locks	8.5	10	8	PVC	0	0		
56	ms 4-7	land	Combined Locks	15.3	20	27	PVC	0	0		
60	61	land	Combined Locks	196.1	200	18	PVC	37	0		
61	62	land	Combined Locks	179.1	180	18	PVC	16	0		
62	63	land	Combined Locks	317.2	320	18	PVC	0	0		
63	64	land	Combined Locks	150.3	150	18	PVC	0	0		
64	65	land	Combined Locks	63.8	60	18	PVC	0	0		
65	66	land	Combined Locks	96.4	100	18	PVC	0	0		
66	67	land	Combined Locks	224.3	220	18	PVC	0	0		
67	67A	land	Combined Locks	16.3	20	18	PVC	0	0		
67A	68	land	Combined Locks	507.8	510	18	PVC	0	0		
68	31	land	Combined Locks	48.9	50	18	PVC	3	0		
2	1	land	Combined Locks	710.0	710	48	RCP	26	2 188-9 ✓		16-08
3	2	land	Combined Locks	642.5	640	48	RCP	90	0		
4	3	land	Combined Locks	662.9	660	48	RCP	150	0 still ✓		16-07 ✓, 41
10	9	marine	Kaukauna	406.7	410	48	RCP	561	6 359-62		
10A	10	marine	Kaukauna	997.2	1,000	48	RCP	1203	1 350-4		16-06
11	10A	marine	Kaukauna	946.7	950	48	RCP	1143	13 338-45		16-06
12	11	marine	Kaukauna	791.5	790	48	RCP	936	2		
13	12	marine	Kaukauna	865.7	870	48	RCP	1060	12 321-9		16-05, 31
14	13	marine	Little Chute	926.9	930	48	RCP	1113	0 313-16		
15	14	marine	Little Chute	799.8	800	48	RCP	972	10 302-8		
19	18	marine	Little Chute	329.3	330	36	RCP	252	9 283-4		
20	19	marine	Little Chute	649.6	650	36	RCP	512	2 277-8		
21	20	marine	Little Chute	685.9	690	36	RCP	540	1		
21A	21	marine	Little Chute	684.7	680	36	RCP	0	1		
22	21A	marine	Little Chute	615.6	620	36	RCP	0	9 261-3		
23	22	marine	Little Chute	914.5	910	36	RCP	0	6 253-6		
24	23	land	Kaukauna	881.1	880	36	RCP ✓	528	0 still ✓		16-02 ✓, 19
25	24	land	Kaukauna	320.8	320	36	RCP	177	10 385-6 ✓		16-02
29	ms 1	land	Combined Locks	17.0	20	27	RCP	0	3 77 ✓		
31	ms 1	land	Combined Locks	52.6	50	27	RCP	0	0		
31A	31	land	Combined Locks	151.2	150	18	RCP	0	7 65-6		
32A	31A	land	Combined Locks	94.6	90	18	RCP	2	1		
38	38A	land	Little Chute	39.9	40	30	RCP → Pv	12	0 215 ✓		

Footnotes:

© Strategic Municipal Services, Inc.

(I) GLTS reports and video (2016-17)

