

## **Operations Update**

Plant Operations – Treatment and operations continue to be doing well for the month of April. It was the most rainfall ever recorded in Wisconsin during the month of April, according to TV 2 News.

Post ATAD #2 Air Header – Noticed treatment was not normal; PH not being met. Checked calibration on PH probe and found it to be ok. Removed cover on digester roof to inspect surface area of liquid and noticed air only coming up in one area. Pumped down to check header for failure and header was ok. Suspect air header plugged with bio-solids. I will have more info at Tuesday's meeting.

Plant/Kruger SCADA Computers – June 13 – 15<sup>th</sup> is still the tentative date set by L.W. Allen to install the new SCADA computers.

ATAD Programming – Will be accomplished with the SCADA computer upgrades.

Energy Use and Cost History – Included in the update is the energy use and cost history back to 2015. The peaks that are shown on the graphs generally are caused by higher flows in those months.

## **Maintenance Update**

Fairbanks Vertical Turbine Pump #3 – Fairbanks completed repairs on the pump, & completed a Certified Performance Curve. Received pump back on Tuesday May 2<sup>nd</sup> and L.W Allen had all contractors lined up to have it reinstalled. Pump was installed plus clearances were set, then put back into service

Process Return Pump Drives –The new upgrades are still tentatively scheduled for May 9<sup>th</sup> & 10<sup>th</sup>.

ACTI-FLO Water Champs – Received the new parts for the vacuum head assembly and a new motor with power cable and hardware. We are now covered in the event of a failure to the water champs which will reduce the three to four week lead time for the new items.

Director of Operations and Maintenance  
Kevin Skogman

## Dawn Bartel

**From:** Kevin Skogman <kevin.skogman@hvmsd.org>  
**Sent:** Thursday, May 4, 2017 7:58 AM  
**To:** Dawn Bartel  
**Subject:** FW: Report: Energy Use and Cost History

# Energy Use and Cost History - Kaukauna Utilities

January 2015 to December 2017

**Customer:** HOVMSDC  
**Account No:** 9012694  
**Location:** SEWAGE DIST  
**2015**

Year	Month	Retail rate code	Bill Days	On-Peak [kWh]	Off-Peak [kWh]	Total [kWh]	On-Peak Demand [kW]	Off-Peak Demand [kW]	Billed Demand [kW]	Load Factor [%]	Total Cost [\$]	Average Cost [\$ / kWh]
2015	January	Cp2	31	223,203	397,465	620,668	1,047.1	1,030.9	1,047.1	80%	\$45,245.56	\$0.0729
2015	February	Cp2	28	215,060	357,316	572,376	1,069.7	1,004.9	1,069.7	80%	\$42,978.97	\$0.0751
2015	March	Cp2	31	237,132	398,308	635,440	1,046.5	997.9	1,046.5	82%	\$44,280.73	\$0.0697
2015	April	Cp2	30	250,237	410,929	661,166	1,122.1	1,069.2	1,122.1	82%	\$47,402.88	\$0.0717
2015	May	Cp2	31	216,269	426,799	643,068	1,085.9	1,077.8	1,085.9	80%	\$45,876.35	\$0.0713
2015	June	Cp2	30	235,810	376,701	612,511	1,364.6	1,233.9	1,364.6	62%	\$49,761.34	\$0.0812
2015	July	Cp2	31	231,853	359,546	591,399	1,023.3	1,029.2	1,023.3	78%	\$40,709.29	\$0.0688
2015	August	Cp2	31	227,854	380,793	608,647	1,104.3	1,053.5	1,104.3	74%	\$48,898.63	\$0.0803
2015	September	Cp2	30	222,284	359,194	581,478	1,270.6	1,050.3	1,270.6	64%	\$44,199.57	\$0.0760
2015	October	Cp2	31	229,795	381,282	611,077	1,068.1	1,036.3	1,068.1	77%	\$43,610.96	\$0.0714
2015	November	Cp2	30	206,035	382,605	588,640	1,028.7	1,014.1	1,028.7	79%	\$38,686.22	\$0.0657
2015	December	Cp2	31	231,745	398,673	630,418	1,463.9	1,483.4	1,463.9	58%	\$42,355.69	\$0.0672
<b>Total</b>				<b>2,727,277</b>	<b>4,629,611</b>	<b>7,356,888</b>	<b>13,694.9</b>	<b>13,081.5</b>	<b>13,694.9</b>		<b>\$534,006.19</b>	
<b>Minimum</b>				<b>206,035</b>	<b>357,316</b>	<b>572,376</b>	<b>1,023.3</b>	<b>997.9</b>	<b>1,023.3</b>	<b>58%</b>	<b>\$38,686.22</b>	<b>\$0.0657</b>
<b>Maximum</b>				<b>250,237</b>	<b>426,799</b>	<b>661,166</b>	<b>1,463.9</b>	<b>1,483.4</b>	<b>1,463.9</b>	<b>82%</b>	<b>\$49,761.34</b>	<b>\$0.0812</b>
<b>Average</b>				<b>227,273</b>	<b>385,801</b>	<b>613,074</b>	<b>1,141.2</b>	<b>1,090.1</b>	<b>1,141.2</b>	<b>75%</b>	<b>\$44,500.52</b>	<b>\$0.0726</b>

Customer: HOVMSDC

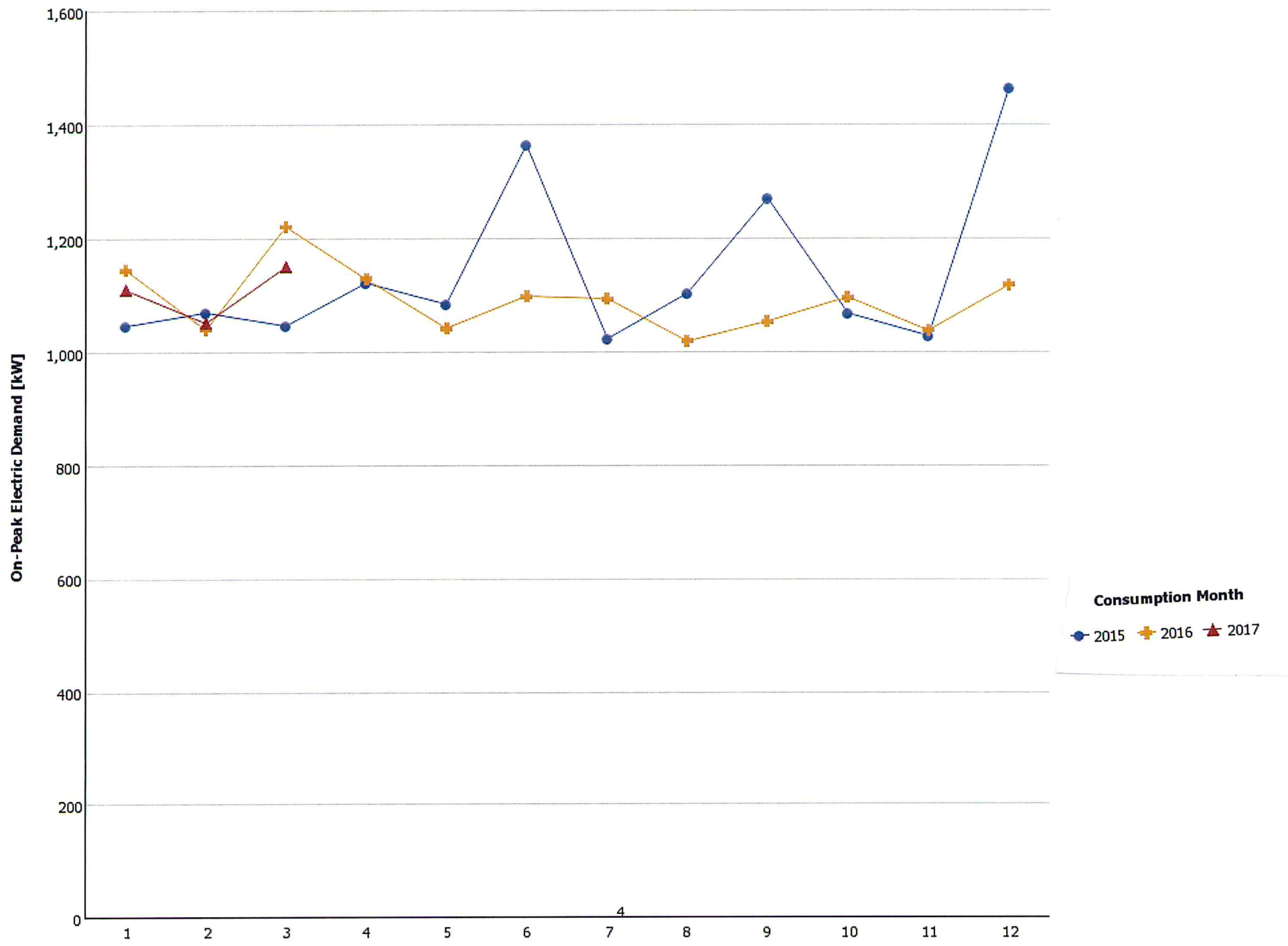
Account No: 9012694  
 Location: SEWAGE DIST  
 2016

Year	Month	Retail rate code	Bill Days	On-Peak [kWh]	Off-Peak [kWh]	Total [kWh]	On-Peak Demand [kW]	Off-Peak Demand [kW]	Billed Demand [kW]	Load Factor [%]	Total Cost [\$]	Average Cost [\$/kWh]
2016	January	Cp2	31	216,003	428,806	644,809	1,145.3	1,089.7	1,145.3	76%	\$41,566.01	\$0.0645
2016	February	Cp2	29	221,607	372,395	594,002	1,040.6	1,057.3	1,040.6	82%	\$39,408.68	\$0.0663
2016	March	Cp2	31	261,430	405,403	666,833	1,221.5	1,132.4	1,221.5	73%	\$40,536.38	\$0.0608
2016	April	Cp2	30	228,858	396,899	625,757	1,130.8	1,126.4	1,130.8	77%	\$39,567.93	\$0.0632
2016	May	Cp2	30	215,542	380,980	596,522	1,041.7	1,022.2	1,041.7	80%	\$36,234.00	\$0.0607
2016	June	Cp2	30	240,894	386,697	627,591	1,098.4	1,176.1	1,098.4	79%	\$42,356.59	\$0.0675
2016	July	Cp2	31	212,869	418,333	631,202	1,093.5	1,073.5	1,093.5	78%	\$46,917.32	\$0.0743
2016	August	Cp2	31	235,598	352,710	588,308	1,019.5	978.5	1,019.5	78%	\$43,463.09	\$0.0739
2016	September	Cp2	30	222,972	364,080	587,052	1,053.5	992.0	1,053.5	77%	\$43,081.17	\$0.0734
2016	October	Cp2	31	220,392	397,098	617,490	1,095.7	1,063.8	1,095.7	76%	\$40,359.90	\$0.0654
2016	November	Cp2	30	222,357	389,297	611,654	1,038.4	1,009.8	1,038.4	82%	\$40,392.65	\$0.0660
2016	December	Cp2	31	231,229	424,175	655,404	1,118.3	1,102.7	1,118.3	79%	\$45,416.31	\$0.0693
<b>Total</b>				<b>2,729,751</b>	<b>4,716,873</b>	<b>7,446,624</b>	<b>13,097.2</b>	<b>12,824.5</b>	<b>13,097.2</b>		<b>\$499,300.03</b>	
<b>Minimum</b>				<b>212,869</b>	<b>352,710</b>	<b>587,052</b>	<b>1,019.5</b>	<b>978.5</b>	<b>1,019.5</b>	<b>73%</b>	<b>\$36,234.00</b>	<b>\$0.0607</b>
<b>Maximum</b>				<b>261,430</b>	<b>428,806</b>	<b>666,833</b>	<b>1,221.5</b>	<b>1,176.1</b>	<b>1,221.5</b>	<b>82%</b>	<b>\$46,917.32</b>	<b>\$0.0743</b>
<b>Average</b>				<b>227,479</b>	<b>393,073</b>	<b>620,552</b>	<b>1,091.4</b>	<b>1,068.7</b>	<b>1,091.4</b>	<b>78%</b>	<b>\$41,608.34</b>	<b>\$0.0671</b>

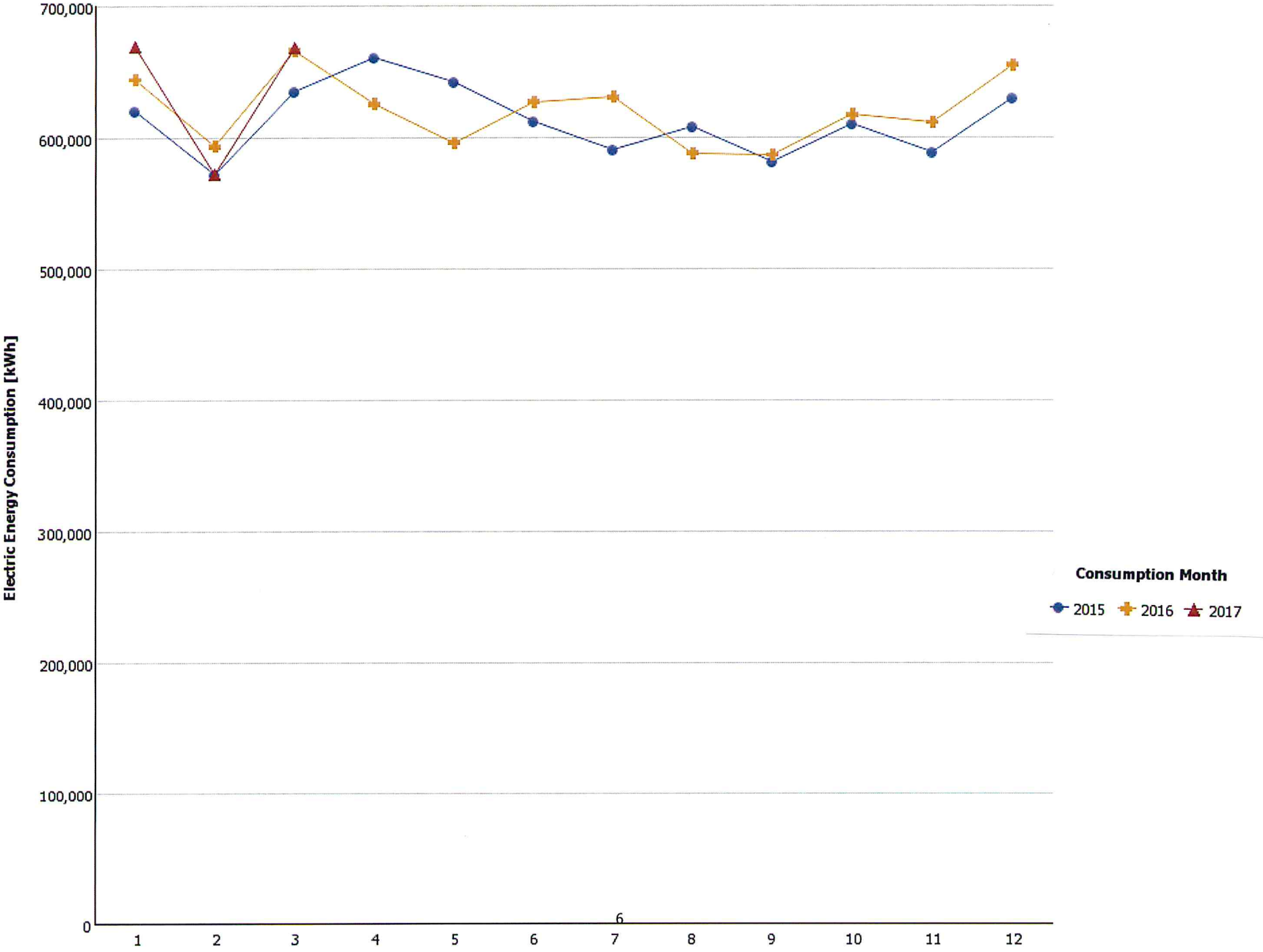
Customer: HOVMSDC  
 Account No: 9012694  
 Location: SEWAGE DIST  
 2017

Year	Month	Retail rate code	Bill Days	On-Peak [kWh]	Off-Peak [kWh]	Total [kWh]	On-Peak Demand [kW]	Off-Peak Demand [kW]	Billed Demand [kW]	Load Factor [%]	Total Cost [\$]	Average Cost [\$/kWh]	
2017	January	Cp2	31	235,317	433,740	669,057	1,111.3		1,111.3	81%	\$46,755.89	\$0.0699	
2017	February	Cp2	28	214,912	358,047	572,959	1,053.0		1,053.0	81%	\$33,684.52	\$0.0588	
2017	March	Cp2	31	260,103	408,695	668,798	1,150.7		1,150.7	78%	\$37,983.12	\$0.0568	
<b>Total</b>				<b>710,332</b>	<b>1,200,482</b>	<b>1,910,814</b>	<b>3,315.1</b>		<b>3,315.1</b>			<b>\$118,423.53</b>	
<b>Minimum</b>				<b>214,912</b>	<b>358,047</b>	<b>572,959</b>	<b>1,053.0</b>		<b>1,053.0</b>	<b>78%</b>	<b>\$33,684.52</b>	<b>\$0.0568</b>	
<b>Maximum</b>				<b>260,103</b>	<b>433,740</b>	<b>669,057</b>	<b>1,150.7</b>		<b>1,150.7</b>	<b>81%</b>	<b>\$46,755.89</b>	<b>\$0.0699</b>	
<b>Average</b>				<b>236,777</b>	<b>400,161</b>	<b>636,938</b>	<b>1,105.0</b>		<b>1,105.0</b>	<b>80%</b>	<b>\$39,474.51</b>	<b>\$0.0620</b>	

### On-Peak Demand [kW]



### Total Energy [kWh]



### Total Cost [\$]

