

University of Wisconsin – Milwaukee
Industrial Assessment Program Application



focus on energy[™]

Partnering with Wisconsin utilities



The University of Wisconsin-Milwaukee Industrial Assessment Center, funded by Department of Energy, Focus on Energy and University of Wisconsin Milwaukee, is dedicated to supporting Wisconsin small and medium-sized manufacturing facilities to:

- Improve energy efficiency (cut energy bill),
- Reduce solid wastes (cut waste management cost),
- Increase manufacturing productivity (increase profit and competitiveness).

The UWM Industrial Assessment Center, directed by five professors in Mechanical and Materials Engineering, is offering the following beneficial services through their combined technical expertise and professional experience:

- No cost onsite assessment and advising (cost covered by DOE)
- In-depth technical support from manufacturing process perspectives
- Detailed data and analysis results for decision support
- The assessment and support can be conducted proprietarily, if requested,

The UWM assessment is a **level II technical assessment** which are conducted through on-site data collection using advanced instruments and technical analysis with the UWM faculty's expertise from their research and educational background.

Eligibility for a Wisconsin manufacturing facility to receive the free technical support:

- Less than 500 employees
- Gross annual sales under \$100 million
- Annual energy bills greater than \$100,000 and less than \$3 million

Please fill out the attached two-page info form, and return to:

Chris Yuan, Ph.D.

Director, Industrial Assessment Center
Department of Mechanical Engineering
University of Wisconsin, Milwaukee

3200 N. Cramer St, EMS 1019

Milwaukee, WI 53201

Tel: (414) 229-5639

Fax: (414) 229-6958

Email: cyuan@uwm.edu

MILWAUKEE WISCONSIN

JOURNAL SENTINEL



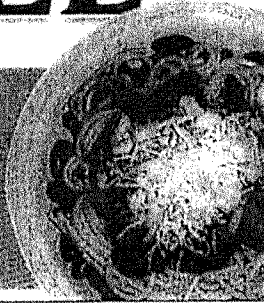
KOHL'S
expect great things

BREWERS
MAGIC
NUMBER **8**

A dramatic win

Braun comes through
in 11th inning **Sports**

Food
Regional
delicacies



PULITZER PRIZE WINNER: 2008, 2010, 2011

Milwaukee Journal Sentinel

UWM will help firms reduce energy waste

By **THOMAS CONTENT**
tcontent@journal sentinel.com

The University of Wisconsin-Milwaukee is one of 24 universities nationwide selected to help train students for jobs while helping local businesses cut energy waste.

The Department of Energy is awarding \$30 million over five years to 24 universities, including \$1.5 million to University of Wisconsin-Milwaukee.

UWM will re-establish an "industrial assessment center" program to train engineering students in energy management concepts. As part of the project, engineering faculty and students plan to consult with small- and medium-size manufacturers, assessing their energy use and identifying

recommendations for opportunities to reduce waste.

"This means a lot to UWM and Wisconsin," said Chris Yuan, UWM assistant professor of mechanical engineering. The industrial assessment center, he said, "will provide free technical support for Wisconsin medium- and small-size manufacturers to reduce their energy consumption, save on their costs, and improve their sustainability performance."

Companies can expect to see bottom-line savings of \$40,000 to \$50,000 per year, he said.

Yuan said the university was pleased it received the maximum funding possible from the Energy

Please see **POWER, 4D**

From page 1

POWER

Grant to reduce wasted energy

Department. The total budget will be \$2 million over five years, including \$250,000 from Focus on Energy, the statewide energy efficiency initiative paid for by utility customers, and \$250,000 from UW-Milwaukee.

The Milwaukee campus hosted an industrial assessment center from 1986 to 2007. The national program began in 1976 and has resulted in more than 15,000 free energy efficiency assessments for Wisconsin firms.

Each Industrial Assessment Center will be expected to train at least 10 to 15 students per year, conduct about 20 energy assessments annually and perform extensive follow-up reporting, tracking, implementation and management-improvement activities.

"This industrial-efficiency train-

ing program opens the door to good jobs in a growing, global sector for thousands of energy-savvy students while promoting real, boots-on-the-ground progress toward our transition to a clean energy economy," said Energy Secretary Steven Chu in a statement. "The centers will provide a boost to the next generation of American workers as well as to the businesses with which they work."

For the past several years, the closest industrial assessment center to Milwaukee has been based at University of Illinois-Chicago.

Partners joining UWM in the initiative include the Wisconsin Focus on Energy program, Milwaukee's Office of Environmental Sustainability, the Wisconsin Energy Research Consortium, the Northeastern Wisconsin Manufacturing Alliance and the Smart Business Forum, a local nonprofit that provides sustainable business consulting to businesses. Other partners include the Wisconsin Cast Metals Association and the Milwaukee Area Technical College's Oak Creek-based Center for Energy Conservation and Advanced Manufacturing.